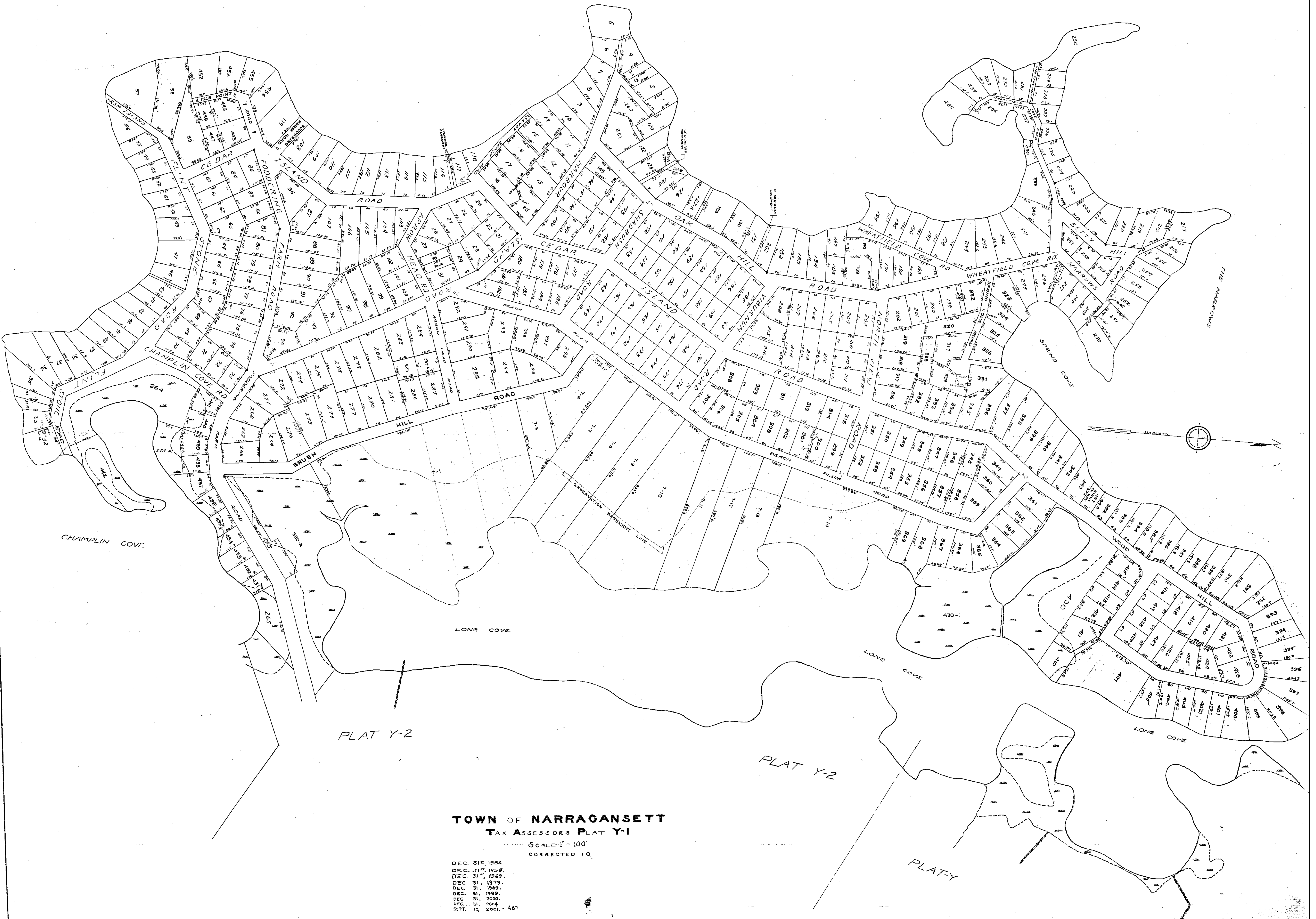


SALT POND

SALT POND



TOWN OF NARRAGANSETT
TAX ASSESSORS PLAT Y-1

SCALE 1" = 100'
 CORRECTED TO

- DEC. 31, 1952
- DEC. 31, 1959
- DEC. 31, 1969
- DEC. 31, 1979
- DEC. 31, 1989
- DEC. 31, 1999
- DEC. 31, 2000
- DEC. 31, 2004
- SEPT. 10, 2007 - 407

