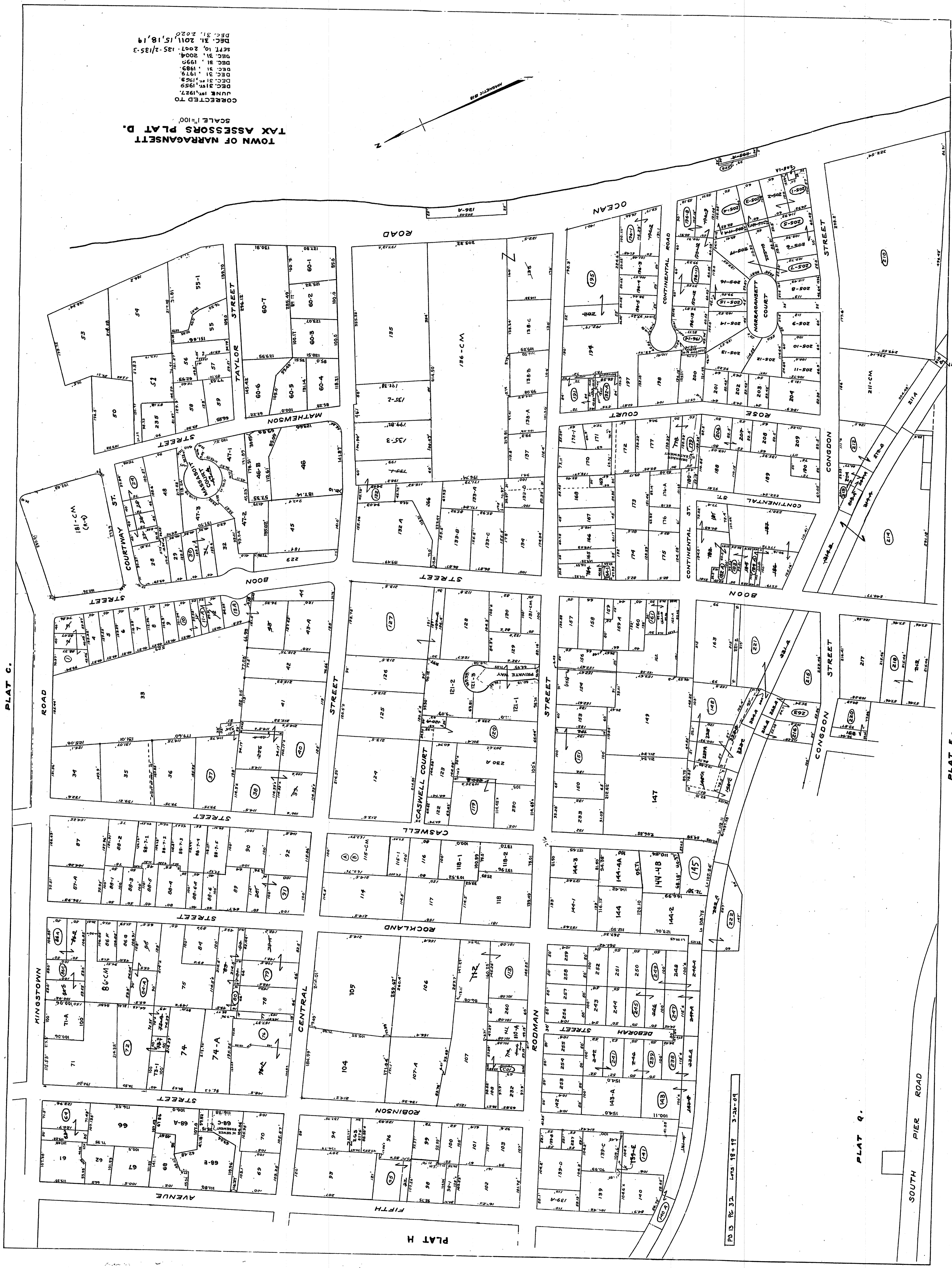
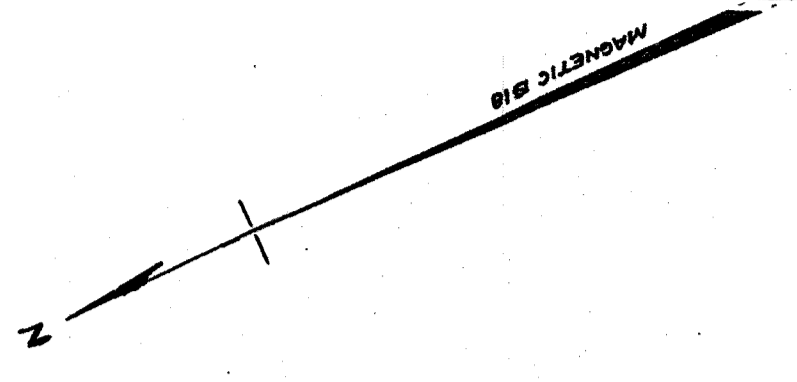


TOWN OF NARRAGANSETT
 TAX ASSESSORS PLAT D.
 SCALE 1"=100'
 CORRECTED TO
 JUNE 1927.
 DEC. 31, 1929.
 DEC. 31, 1930.
 DEC. 31, 1934.
 DEC. 31, 1935-2/1935-3
 DEC. 31, 2004.
 DEC. 31, 2011.
 DEC. 31, 2020.



PLAT C.

PLAT H

PLAT Q.

PLAT E.

PLAT Q. LOTS 18-19 3-24-09

SOUTH PIER ROAD